



Rijkswaterstaat
Ministerie van Infrastructuur en Waterstaat

EPR for textiles in the Netherlands

Emile Bruls
10 April 2024

Background EPR

Policy programme for circular textile 2020-2025

Several voluntary projects to improve textile collection (both quantity and quality)

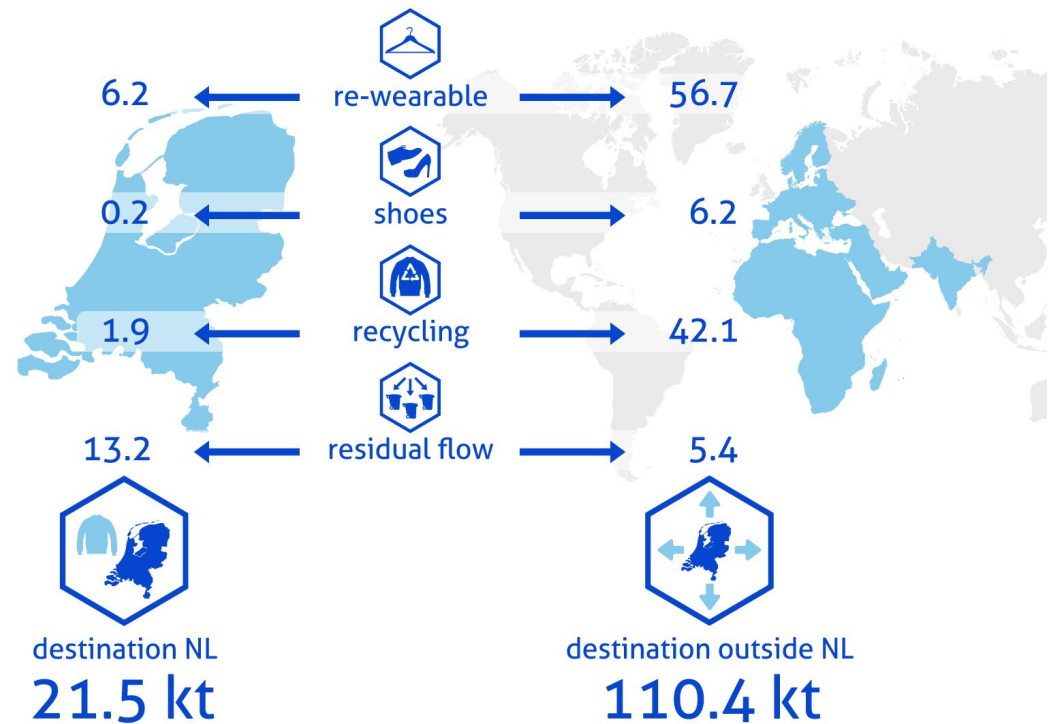
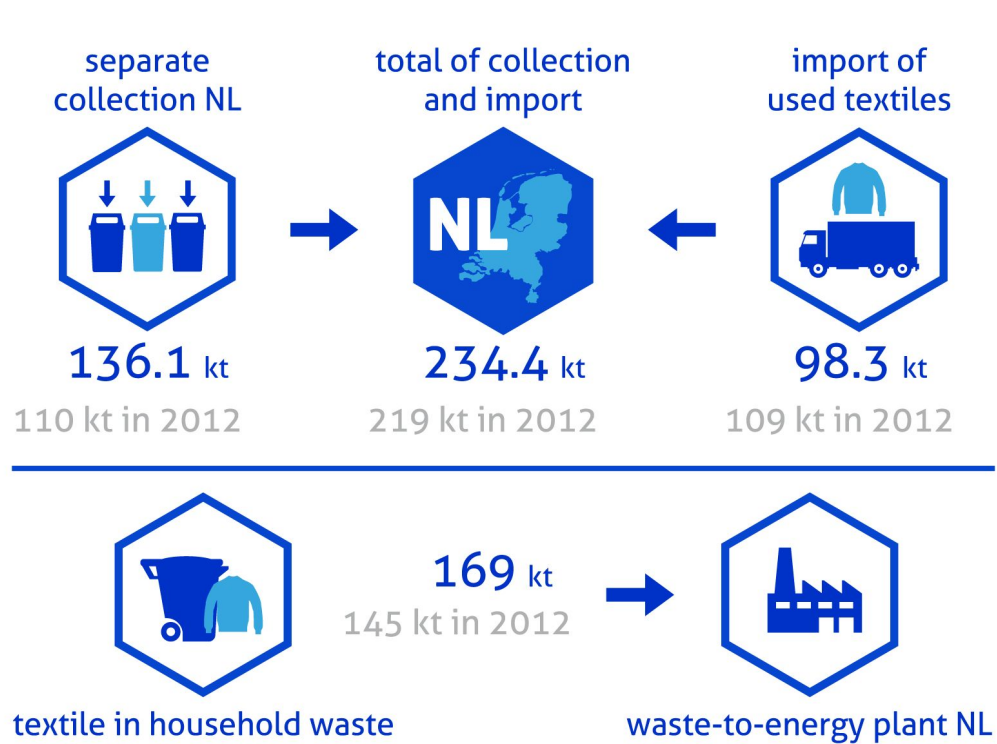
Need for innovation in textile-to-textile recycling, request from textile sector





Textile collection and treatment

Mass balance textile 2018





Goals of EPR

Of the total percentage of textiles (kg) placed on the market in 2025:

- At least 50% is prepared for reuse or recycled (75% in 2030)
- At least 20% is prepared for reuse (25% in 2030)
- At least 10% is prepared for reuse in the Netherlands (15% in 2030)

Of the total textiles which are recycled in 2025:

- At least 25% is recycled fibre-to-fibre (33% in 2030)

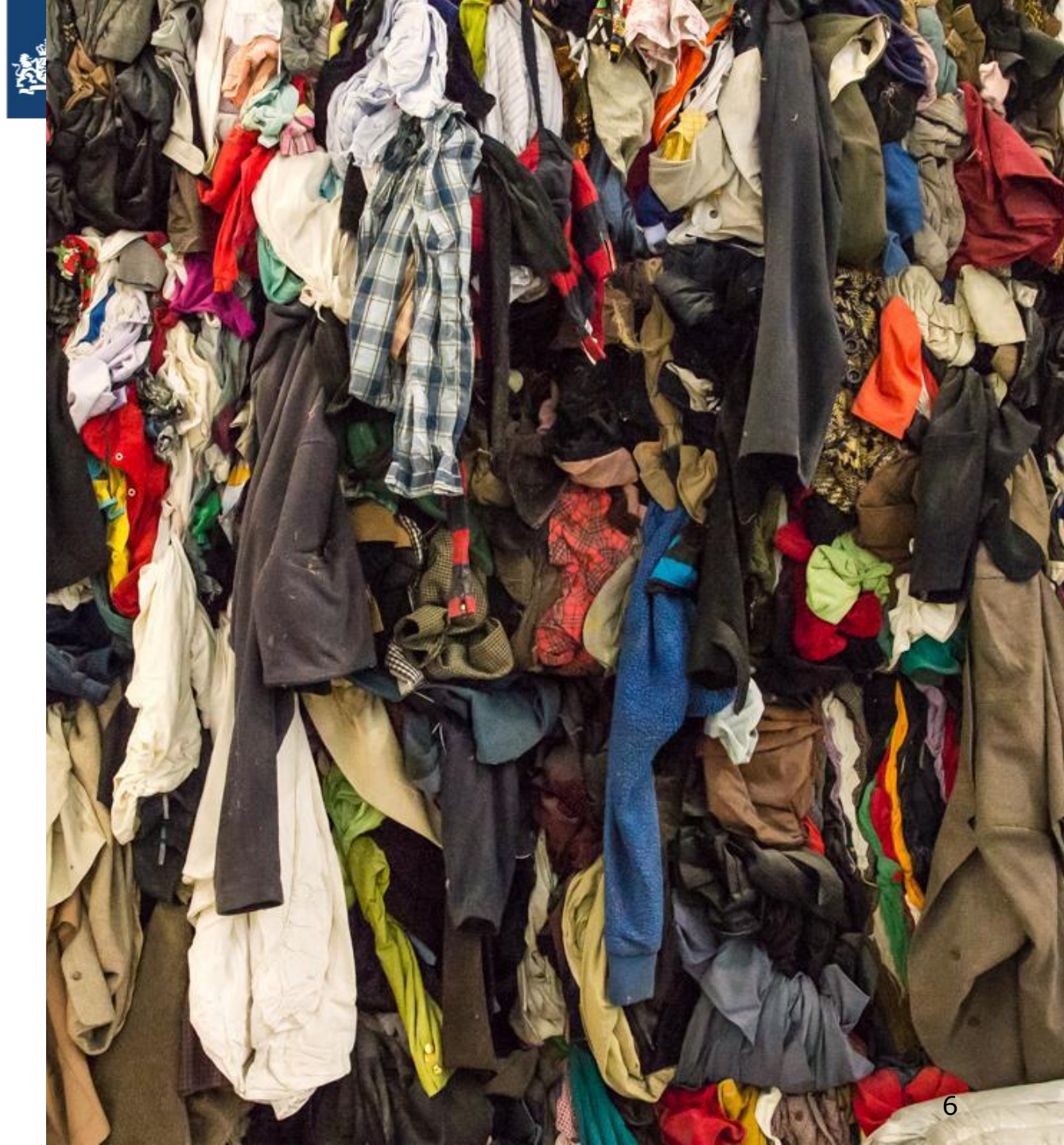
EPR legislation

- In force since 1 July 2023
- Producers responsible for appropriate collection system, recycling, reuse and financing the system
- Scope: clothing, corporate wear, household linen (custom codes: 61, 62, 6302)
- [Decree on EPR](#)



And...

- The producer is encouraged to take measures to use recycled textile fibres in new products
- Producers are responsible individually but can cooperate in a PRO
- Annual reporting of products placed on market and products recycled and prepared for reuse
- Evaluation by 2028



And what now...

- Two PRO's have registered
- One with about 750 signatories
- One with about 20 signatories
- About 60 individual companies registered





Pro will now ...

- Stichting UPV Textiel (PRO) will develop financial system
 - Rates for producers based on what is put on the market
 - Eco modulation
- PRO is making arrangements with municipalities, textile and waste collectors, charity shops
 - Collection system
 - Costs and finances
- PRO will set up innovation and research fund
- Request to make membership of a PRO mandatory based on substantial majority (producers and market share)



Thank you!



Emile Bruls

emile.bruls@rws.nl